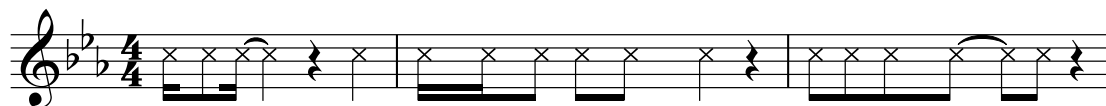




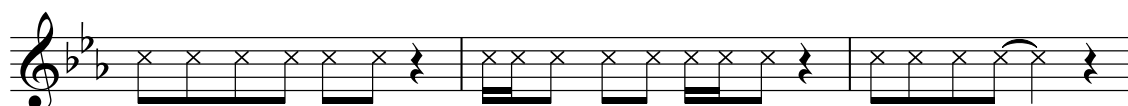
MRS GREN

Music and lyrics by
Ed Walsh

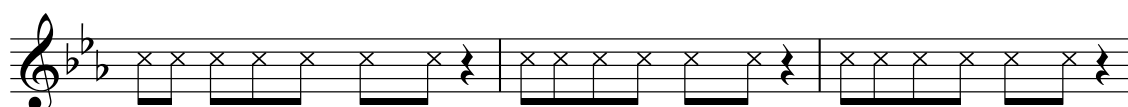
♩ = 130



M-rs Gren: the features of liv-ing things. M is for move-ment,



R's for res-pir-a-tion, S is for sen-si-ti-vi-ty, G is for growth,



R is for re-pro-duc-tion, E is for ex-cre-tion, N is for nu-tri-tion,

E_b E_b(sus4) E_b E_b

M-rs Gren! What's that
What's that
What's that

B \flat Cm 7

up in the nest? — Look! White eggs I can see, —
 swimm-ing in the sea? Us - ing its gills to breathe,
 stalk-ing through the jung-le? He has to right a-way, —

Fm 7 E \flat A \flat

— With a chick — in- side. — Waiting to be free.
 — Fresh or salt — wa-ter, — Is its home to be.
 — Look-ing for — its prey, — Sur-vive the next day.

B \flat 7(SUS4) B \flat E \flat

— — — — —
 — — — — —
 — — — — —
 What's that
 What's that
 What's that

B \flat Cm 7

up in the tree?_ What's that in the sky,_
 in the co-ral?_ Its scales match the scene
 climbing the trees?_ With re - trac - ta - ble claws,

Fm 7 E \flat D 7 A \flat

— soar - ing_ so high?_ Us - ing its wings_ to fly.
 — to cam - ou - flage, And hide_ ea - si - ly..
 — from its stri - py paws,_ Wait - ing pat - ient - ly..

B \flat 7(SUS4) B \flat A \flat

— — — In our world

B \flat Eb Cm 7

—there are ma - ny_ crea - tures, great and small, —

Detailed description: This system contains the first three measures of the song. The vocal line starts with a half note G \flat (B \flat), followed by quarter notes A \flat , B \flat , C \flat , D \flat , E \flat , and F \flat . There is a whole rest in the second measure, followed by a quarter rest in the third. The piano accompaniment features a steady bass line of quarter notes G \flat , A \flat , B \flat , and C \flat in the bass clef, and chords in the treble clef. The first measure has a B \flat chord, the second an Eb chord, and the third a Cm 7 chord.

A \flat B \flat Eb

They run and climb and swim and fly, fast

Detailed description: This system contains the next three measures. The vocal line begins with a quarter rest, followed by quarter notes G \flat , A \flat , B \flat , C \flat , D \flat , and E \flat . There is a quarter rest in the second measure, followed by quarter notes F \flat , G \flat , and A \flat in the third. The piano accompaniment continues with the same bass line and chords: A \flat in the first measure, B \flat in the second, and Eb in the third.

Cm 7 A \flat B \flat

— and slow. — M-rs Gren, you give the fea-

Detailed description: This system contains the next three measures. The vocal line starts with a quarter note G \flat , followed by quarter notes A \flat , B \flat , and C \flat . There is a whole rest in the second measure, followed by quarter notes D \flat , E \flat , and F \flat in the third. The piano accompaniment continues with Cm 7 in the first measure, A \flat in the second, and B \flat in the third.

E \flat Cm 7 A \flat

- tures to keep the crea-tures a-live, M-rs Gren,

Detailed description: This system contains the final three measures. The vocal line starts with a quarter note G \flat , followed by quarter notes A \flat , B \flat , and C \flat . There is a whole rest in the second measure, followed by quarter notes D \flat , E \flat , and F \flat in the third. The piano accompaniment continues with E \flat in the first measure, Cm 7 in the second, and A \flat in the third.

B \flat Eb Eb(SUS4) Eb Ab

— you help the world — sur - vive.

Detailed description: This system contains the first musical phrase. The vocal line starts with a half note G \flat (B \flat), followed by quarter notes A \flat (Eb), B \flat (Eb), and C \flat (Ab), then a quarter rest, another quarter rest, a quarter note G \flat (B \flat), and a half note F \flat (Eb). The piano accompaniment features a steady bass line of quarter notes (B \flat , Eb, Ab, B \flat , Eb, Ab) and a treble line of chords (B \flat 7, Eb7, Eb(SUS4), Eb7, Ab7).

B \flat Eb Cm 7 Ab

The world sur - vive. —

Detailed description: This system contains the second musical phrase. The vocal line begins with a quarter rest, followed by quarter notes G \flat (B \flat), A \flat (Eb), B \flat (Eb), and C \flat (Ab), then a half note rest. The piano accompaniment continues with the bass line and adds a treble line of chords (B \flat 7, Eb7, Cm 7 , Ab7).

B \flat Eb Eb(SUS4) Eb Ab

The world sur- vive. —

Detailed description: This system contains the third musical phrase, which is a repeat of the second phrase. The vocal line and piano accompaniment are identical to the previous system, ending with a double bar line.

Eb Ab Eb

Swimm-ing in the sea, Swimm-ing in the sea,

Detailed description: This system contains the fourth musical phrase. The vocal line starts with a half note G \flat (Eb), followed by quarter notes A \flat (Ab), B \flat (Eb), and C \flat (Ab), then a quarter rest, a half note rest, another quarter rest, and finally quarter notes G \flat (Eb), A \flat (Ab), B \flat (Eb), and C \flat (Ab). The piano accompaniment features a bass line of quarter notes (Eb, Ab, Eb, Ab, Eb, Ab) and a treble line of chords (Eb7, Ab7, Eb7, Ab7, Eb7, Ab7).

Ab Eb

Swimm-ing in the sea,
Soar-ing so high, _

Ab Eb

Swimm-ing in the sea,
Soar-ing so high, _

Ab Bb

Swimm-ing in the sea,
Soar-ing so high, _

E \flat Cm 7

Swimm-ing in the sea,
Soar-ing so high, _

A \flat B \flat

Swimm-ing in the sea,
Soar-ing so high, _

E \flat E \flat

Swimm-ing in the sea.
Soar-ing so high, Swimm-ing in the sea.